

4

3

2

1

D

D

C

C

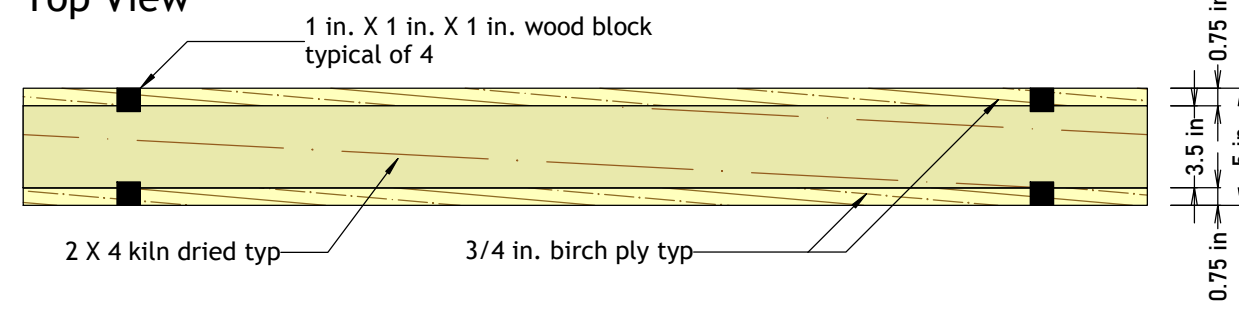
B

B

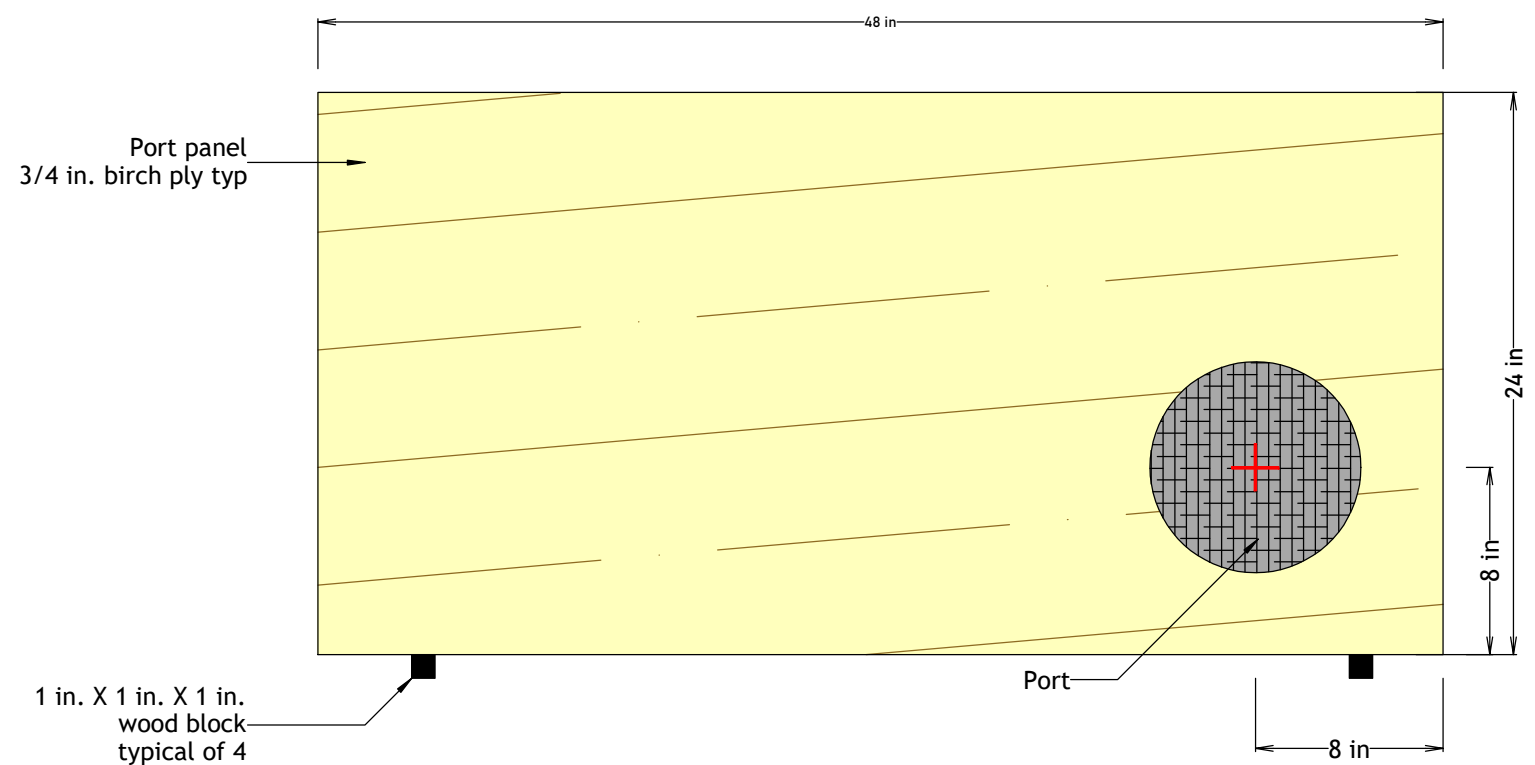
A

A

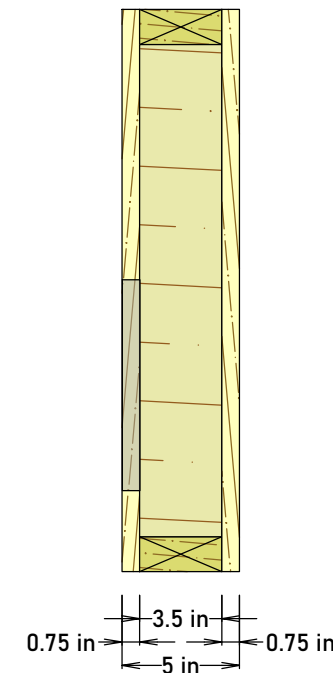
Top View



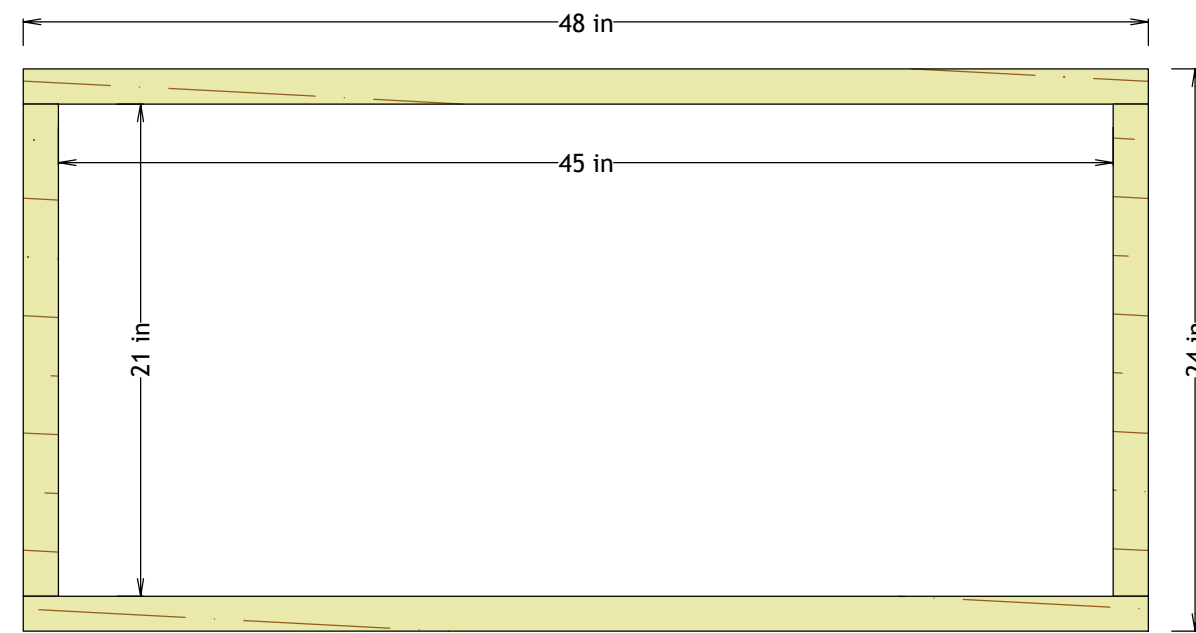
Face View



Side View



Frame View



Notes -

Assemble with baltic birch 3/4 plywood and kiln dried 2 X 4s
 Project allows using 4 ft. X 2 ft. "project board" 3/4 plywood without cutting or a standard 8 ft.X 4 ft. plywood sheet cut into 4 equal pieces with no waste

Port sizes -

- 30 Hz. - 1-3/8 in.
- 40 Hz. - 1-7/8 in.
- 60 Hz. - 3-1/2 in.
- 70 Hz. - 4-1/2 in.
- 80 Hz. - 5-7/8 in.
- 90 Hz. - 7 in.
- 100 Hz. - 8-1/2 in.

Center all port sizes on red cross
 Port illustrated is 9 in. (maximum) size
 Cut port with hole saw or jig saw
 Cover port with 1/2 in. hardware cloth to keep pets out
 DO NOT put any absorptive material inside
 Install 3M 130C Linerless Rubber Splicing Tape on frame edge that mates with port panel to serve as gasket
 Caulk all other internal seams with acoustic caulk
 Screw port panel to frame - do not glue
 Glue and screw the rest of the assembly
 Install screws every 4 in.
 Use of glue blocks suggested
 Mount on rubber feet or 1 X 1 X 1 wood blocks for stability
 Finish as desired with paint, fabric, or whatever, but
DO NOT COVER THE PORT
 Install with port facing a wall, with 1 to 2 in. clearance to allow the free airflow to the port
 Leave 1 to 2 in. around sides, top, and bottom to allow port to breathe properly
 Face into bicorner or tricorner for better performance
 (bicorner = 2 room surface meet)
 (tricorner = 3 room surfaces meet)

BE SURE TO READ ALL NOTES FOR PROPER CONSTRUCTION AND INSTALLATION!



**MEDIAROOMS
 TECHNOLOGY LLC**

P.O. Box 106 • Ventura, CA 93002
 admin@MediaRoomsTech.com • 805-653-5557
www.MediaRoomsTech.com

MediaRooms Technology

TITLE
**Helmholtz Resonator
 Using Project Boards**

SIZE C	CAGE CODE	DWG NO	REV 1.0
SCALE 1 : 8	Bruce Black	SHEET 1 of 1	

8/23/2024

4

3

2

1